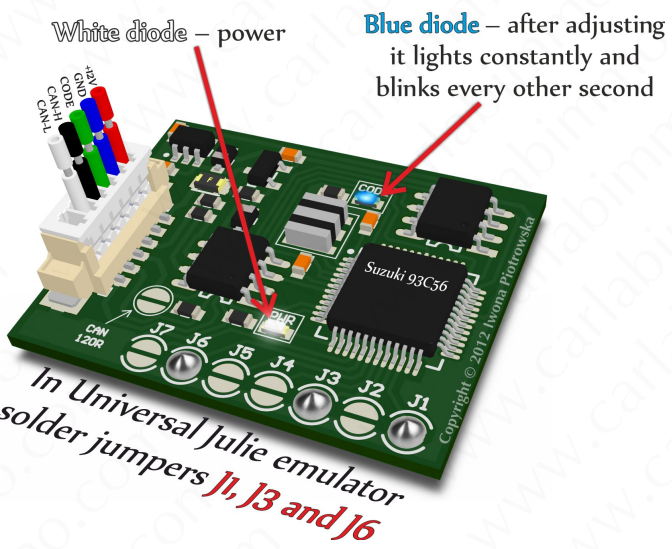


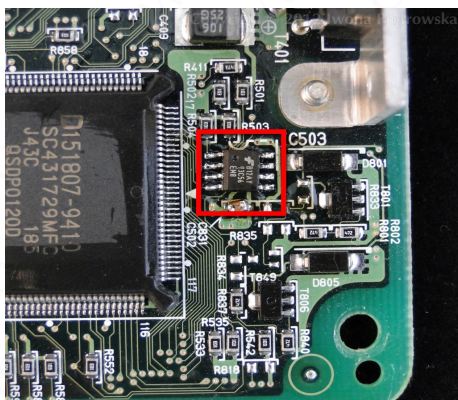


SUZUKI with 93C56 memory IMMO EMULATOR



Use

**Denso ECU with 93C56 memory and 29F200 flash.
The car must have 4C or 4D key.**



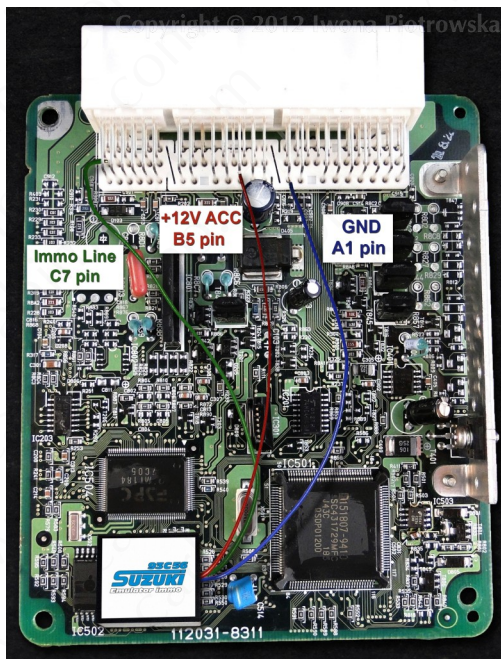
Find 93C56 memory in ECU

OFFSET	00	01	02	03	04	05	06	07	08	09	0A	0B	0C	0D	0E	0F
00000000	00	00	16	AA	8A	57	01	07	00	00	AE	20	00	00	AE	20
00000010	00	00	00	00	FF	FF	FF	FF	00	00	00	00	00	00	00	00
00000020	00	00	08	00	8A	57	F3	49	00	00	00	00	00	00	00	00
00000030	00	00	00	00	00	00	00	00	00	00	00	00	00	00	00	00
00000040	FF	FF	FF	FF	00	00	00	00	AE	5A	FF	FF	FF	FF	FF	FF
00000050	FF	FF	FF	FF	FF	FF	FF	FF	FF	FF	FF	FF	FF	FF	FF	FF
00000060	FF	FF	FF	FF	FF	FF	FF	FF	FF	FF	FF	FF	FF	FF	FF	FF
00000070	00	00	FF	FF	FF	FF	FF	FF	FF	FF	FF	FF	FF	FF	FF	FF
00000080	FF	FF	FF	FF	FF	FF	FF	FF	FF	FF	FF	FF	FF	FF	FF	FF
00000090	FF	FF	FF	FF	FF	FF	FF	FF	FF	FF	FF	FF	FF	FF	FF	FF
000000A0	FF	FF	FF	FF	FF	FF	FF	FF	FF	FF	FF	FF	FF	FF	FF	FF
000000B0	FF	FF	FF	FF	FF	FF	FF	FF	FF	FF	FF	FF	FF	FF	FF	FF
000000C0	FF	FF	FF	FF	FF	FF	FF	FF	FF	FF	FF	FF	FF	FF	FF	FF
000000D0	FF	FF	FF	FF	FF	FF	FF	FF	FF	FF	FF	FF	FF	FF	FF	FF
000000E0	FF	FF	FF	FF	FF	FF	FF	FF	FF	FF	FF	FF	FF	FF	FF	FF
000000F0	FF	FF	FF	FF	FF	FF	FF	FF	FF	FF	FF	FF	FF	FF	FF	FF

From 04 to 07 write 8A 57 01 07 value.

In 93C56 memory
write 8A 57 01 07 values in addresses from 04 to 07

Example of connection

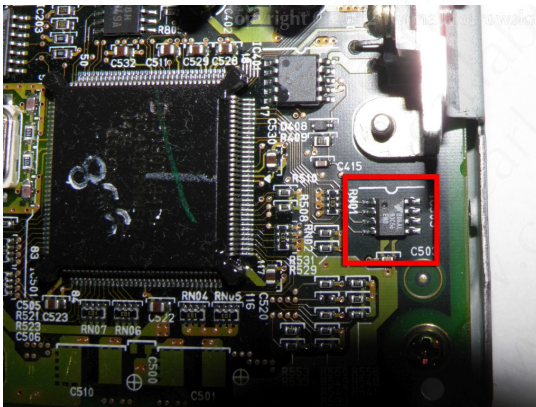


Immo line e.g. socket C pin 7

In different ECU types, the immo line can be in different pins. You check connection between ECU pin and pin 9 of 16-pin OBD socket with a multimeter.

Disconnect immo box!

Subaru Justy 1.3 4WD 2000/2001



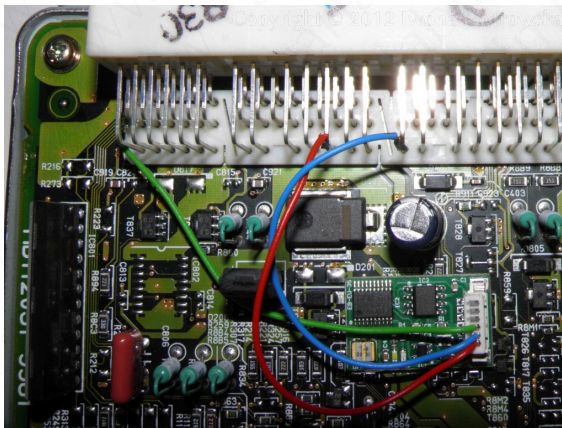
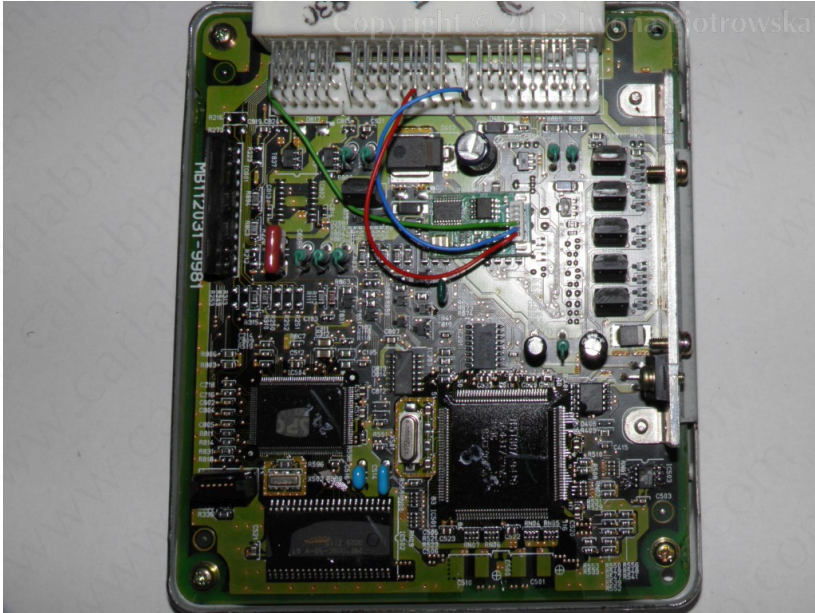
Find 93C56 memory in ECU

8A 57 01 07

OFFSET	00	01	02	03	04	05	06	07	08	09	0A	0B	0C	0D	0E	0F	
00000000	00	00	84	A1	8A	57	01	07	00	00	EC	51	00	00	EC	51	...Sw...ëQ...ëQ
00000010	00	00	00	00	00	00	00	00	00	00	00	00	00	00	00	00é,h.....
00000020	00	00	08	00	A1	E8	04	68	FF	FF	FF	FF	FF	FF	FF	FFAZ.....
00000030	FF	FF	FF	FF	FF	FF	FF	FF	00	00	00	00	00	00	00	FF
00000040	00	00	00	00	00	00	00	00	A5	5A	FF	FF	FF	FF	FF	FF
00000050	FF	FF	FF	FF	FF	FF	FF	FF	FF	FF	FF	FF	FF	FF	FF	FF
00000060	FF	FF	FF	FF	FF	FF	FF	FF	FF	FF	FF	FF	FF	FF	FF	FF
00000070	FF	FF	FF	FF	FF	FF	FF	FF	FF	FF	FF	FF	FF	FF	FF	FF
00000080	FF	FF	FF	FF	FF	FF	FF	FF	FF	FF	FF	FF	FF	FF	FF	FF
00000090	FF	FF	FF	FF	FF	FF	FF	FF	FF	FF	FF	FF	FF	FF	FF	FF
000000A0	FF	FF	FF	FF	FF	FF	FF	FF	FF	FF	FF	FF	FF	FF	FF	FF
000000B0	FF	FF	FF	FF	FF	FF	FF	FF	FF	FF	FF	FF	FF	FF	FF	FF
000000C0	FF	FF	FF	FF	FF	FF	FF	FF	FF	FF	FF	FF	FF	FF	FF	FF
000000D0	FF	FF	FF	FF	FF	FF	FF	FF	FF	FF	FF	FF	FF	FF	FF	FF
000000E0	FF	FF	FF	FF	FF	FF	FF	FF	FF	FF	FF	FF	FF	FF	FF	FF
000000F0	FF	FF	FF	FF	FF	FF	FF	FF	FF	FF	FF	FF	FF	FF	FF	FF

In 93C56 memory
write 8A 57 01 07 values in addresses from 04 to 07

Example of connection



Disconnect immo box!



Warning!!!

Due to possible construction changes of cars, check signals with multimeter in the ECU plug.

We state that we are the only authentic authors of this manual. We possess copyright of this publication. All rights reserved. Unauthorized copying, hiring, lending, public performance will be punished!!! Any trials of unauthorized copying, hiring, quoting prohibited!!! Both service and advertisement constitute copyright and they are the subject to the protection in accordance with the Act from 4th Feb. 1994 on Copyright and Related Laws (Statute Book no. 24 position 93) and protection on the basis of the Act from 8th June 1993 on combating an unfair competition (Statute Book no. 47 position 211)

www.carlabimmo.com

Last updated 12.11.2014